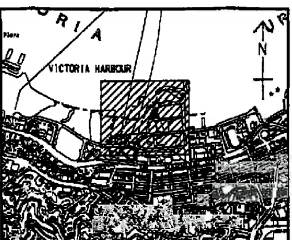
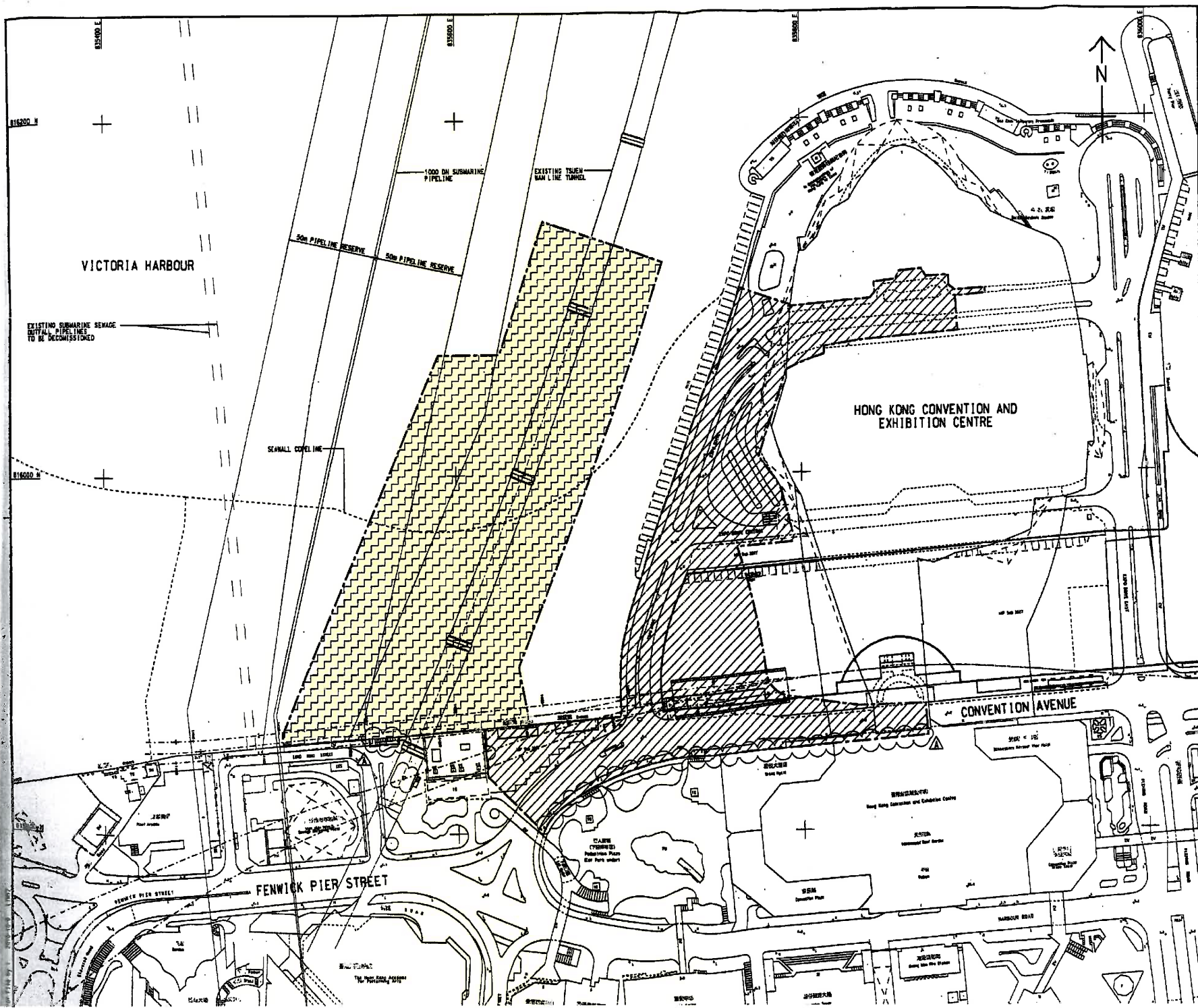


Act ID	Description	Orig Dur	Early Start	Early Finish	2011												2012												2013					
					JAN	FEB	MAR	APR	MAY	JUN	JUL	AUG	SEP	OCT	NOV	DEC	JAN	FEB	MAR	APR	MAY	JUN	JUL	AUG	SEP	OCT	NOV	DEC	JAN	FEB	MAR			
Section I																																		
Contract Obligation																																		
1000	Commencement of Section I of works	0	20JAN11 *		◆ Commencement of Section I of works																													
Initial Works																																		
1050	Apply Marine notice to Marine Department	30	21JAN11	19FEB11	■ Apply Marine notice to Marine Department (dredg)																													
1060	Apply Marine notice to Marine Dept. Piling	30	18FEB11	19MAR11	■ Apply Marine notice to Marine Dept. Piling																													
1080	Apply FEP under EP356/2009	21	28FEB11	20MAR11	■ Apply FEP under EP356/2009																													
1081	Submission of Works Schedule for FEP	14	05MAR11	21MAR11	■ Submission of Works Schedule for FEP																													
1082	Submission of Location Plan for FEP	14	05MAR11	21MAR11	■ Submission of Location Plan for FEP																													
1083	Submission of Silt Curtain Deployment	14	05MAR11	21MAR11	■ Submission of Silt Curtain Deployment Plan																													
1084	Submission of Silt Screen Deployment Plan	14	05MAR11	21MAR11	■ Submission of Silt Screen Deployment Plan																													
1085	Submission Noise Management Plan	14	05MAR11	21MAR11	■ Submission Noise Management Plan																													
1090	Apply Dumping Permit	30	18FEB11	19MAR11	■ Apply Dumping Permit																													
1100	Apply CNP	30	31JAN11	01MAR11	■ Apply CNP																													
1110	Apply C&D waste disposal	30	20JAN11	18FEB11	■ Apply C&D waste disposal																													
1120	Apply Discharge licence	30	18FEB11	19MAR11	■ Apply Discharge licence																													
1130	Notification of chemical waste Producer	30	20JAN11	18FEB11	■ Notification of chemical waste Producer																													
1140	Notification to Labor Dept-Works	30	20JAN11	18FEB11	■ Notification to Labor Dept-Works Commencement																													
1150	Submit Risk Ass to MTR	21	28FEB11	20MAR11	■ Submit Risk Ass to MTR																													
1260	Erect Hoarding	30	28FEB11	29MAR11	■ Erect Hoarding																													
1270	Demarcation of Marine Site Boundary	21	01MAR11	21MAR11	■ Demarcation of Marine Site Boundary																													
1280	Working Site Office establishment	14	27JAN11	09FEB11	■ Working Site Office establishment																													
Monitoring																																		
1160	Takeover monitoring system from C1	0	21MAR11 *		◆ Takeover monitoring system from C1																													
1180	Commence Monitoring- ADMS,etc	0	21MAR11		◆ Commence Monitoring- ADMS,etc																													
Dredging Works																																		
1070	Submit Dredging MS	30	18FEB11	19MAR11	■ Submit Dredging MS																													
1075	Acceptance of Dredging MS	0		19MAR11	◆ Acceptance of Dredging MS																													
1078	Initial Hydrographic Survey	1	20MAR11	20MAR11	■ Initial Hydrographic Survey																													
1200	Initial Dredging Works for Piling	15	22MAR11	05APR11	■ Initial Dredging Works for Piling																													
1210	Final Hydrographic survey	3	07MAY12	09MAY12	■ Final Hydrographic survey																													
1220	Final Dredging Works	7	10MAY12	16MAY12	■ Final Dredging Works																													
1230	Confirmation Hydrographic survey	70	17MAY12	25JUL12	■ Confirmation Hydrographic survey																													
Piling Works																																		
1240	Submit stage platform MS	30	10FEB11	11MAR11	■ Submit stage platform MS																													
1250	Submit piling MS	30	10FEB11	11MAR11	■ Submit piling MS																													
P1000	Erect temporary Piling Platform	120	06APR11	03AUG11	■ Erect temporary Piling Platform																													
P1020	Pre-drilling	150	06JUN11	02NOV11	■ Pre-drilling																													
P1040	Bored Piles Construction and Testing	250	06JUL11	11MAR12	■ Bored Piles Construction and Testing																													
P1060	Drive Sheet piles along Bored piles	140	03NOV11	21MAR12	■ Drive Sheet piles along Bored piles																													
P1080	Dismantle Temporary Piling Platform	50	25FEB12	14APR12	■ Dismantle Temporary Piling Platform																													
P1100	Dive sheet piles beyond precast seawall	90	17JAN12	15APR12	■ Dive sheet piles beyond precast seawall																													
P1120	Trim pilehead to cut-off level	210	29SEP11	25APR12	■ Trim pilehead to cut-off level																													
P1140	Cut steel casing of bore piles	210	06OCT11	02MAY12	■ Cut steel casing of bore piles																													
P1160	Cut sheet piles to design level for box units	120	08JAN12	06MAY12	■ Cut sheet piles to design level for box units																													

Act ID	Description	Orig Dur	Early Start	Early Finish	2011												2012												2013		
					JAN	FEB	MAR	APR	MAY	JUN	JUL	AUG	SEP	OCT	NOV	DEC	JAN	FEB	MAR	APR	MAY	JUN	JUL	AUG	SEP	OCT	NOV	DEC	JAN	FEB	MAR

Start date	20JAN11	<p style="text-align: center;">GAMMON-LEADER JV</p> <p style="text-align: right;">Works Schedule of Marine Works for EP-356/2009</p>
Finish date	19DEC12	
Data date	20JAN11	
Run date	05MAR11	
Page number	1A	
© Primavera Systems, Inc.	Wan Chai Development Phase II- Central-Wan Chai By pass over MTR Tsuen Wan Line	

- Early bar
- Progress bar
- Critical bar
- Summary bar
- ◆ Start milestone point
- ◆ Finish milestone point



KEY PLAN
SCALE 1 : 20000

- NOTES:**
- COORDINATES ARE BASED ON HONG KONG METRIC GRID (1980) UNLESS OTHERWISE NOTED.
 - LEVELS ARE IN METRES RELATIVE TO HONG KONG PRINCIPAL DATUM (1985) UNLESS OTHERWISE NOTED.
 - DIMENSIONS ARE IN MILLIMETERS UNLESS OTHERWISE NOTED.
 - SETTING OUT DIMENSIONS, LEVELS, COORDINATES ARE TO BE CALCULATED BY THE CONTRACTOR. NO INFORMATION SHOULD BE SCALED PHYSICALLY OR ELECTRICALLY FROM THE DRAWINGS OR FILES.
 - SITE BOUNDARY SETTING OUT POINTS SHALL REFER TO DRAWING NO. 60041297/C4/100/1201.

LEGEND:

- SITE BOUNDARY
- PORTION 1
- PORTION 2 (DELAY POSSESSION)

TENDER ADDENDUM NO.1	SHW JYL OCT 10
TENDER DRAWING	SHW JYL SEP 10

CDP 土木工務發展局
Civil Engineering and Development Department

WAN CHAI DEVELOPMENT PHASE II
WAN CHAI DEVELOPMENT PHASE II - CENTRAL-WAN CHAI BYPASS OVER MTR TSUEN WAN LINE

PORTIONS OF THE SITE

AECOM

DRAWING NO. 60041297/C4/100/1301A

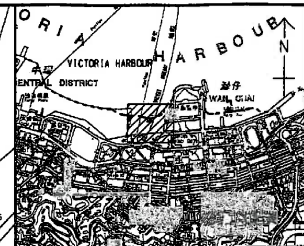
DATE: 16/2010/06

SCALE: A1 1:1000

© COPYRIGHT RESERVED

HARBOUR

VICTORIA HARBOUR



KEY PLAN

SCALE 1 : 20000

NOTES:

1. ALL LEVELS ARE IN METRES WITH REFERENCE TO HONG KONG PRINCIPAL DATUM.
2. ALL COORDINATES ARE GIVEN TO HONG KONG METRIC GRID IN METRES.
3. EXCAVATION LEVELS SHOWN ON THIS DRAWING ARE INDICATIVE ONLY. THE CONTRACTOR SHALL DETERMINE THE EXACT EXCAVATION LEVEL AND AGREE ON SITE WITH THE ENGINEER.
4. FOR THE EXISTING SEALED LEVEL, REFER TO DRAWING NO. 60041297/C4/200/1520.
5. THE INSTRUMENTATION LAYOUT PLAN REFER TO DRAWING NO. 60041297/C4/200/2200.
6. FOR DETAILS OF SHEETPILE WALLS, REFER TO DRAWING NO. 60041297/C4/400/2004.

LEGEND:

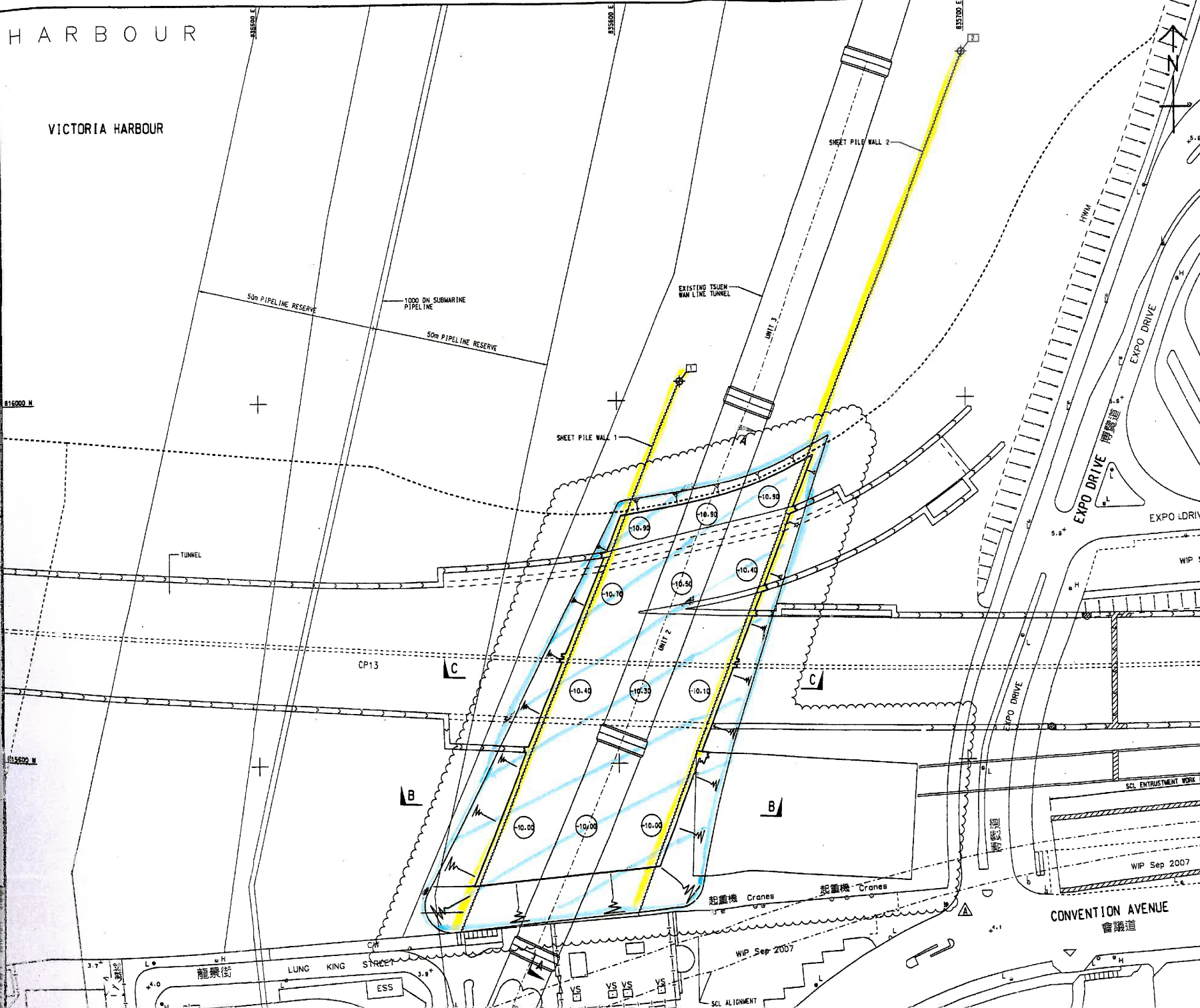
- SHEETPILE WALL (FOR INFORMATION ONLY).
- COPELINE
- CUT SLOPE (1 IN 3)
- INDICATIVE EXCAVATION LEVEL
- FOOTPRINT OF TUNNEL BOX
- SETTING OUT POINT

NO.	EASTING	NORTHING
1	835618.359	816005.289
2	835699.495	816095.518

Designing

816000 M

835600 M



A	TENDER ADDENDUM NO.1	SKM JYL OCT 10
-	TENDER DRAWING	SKM JYL SEP 10

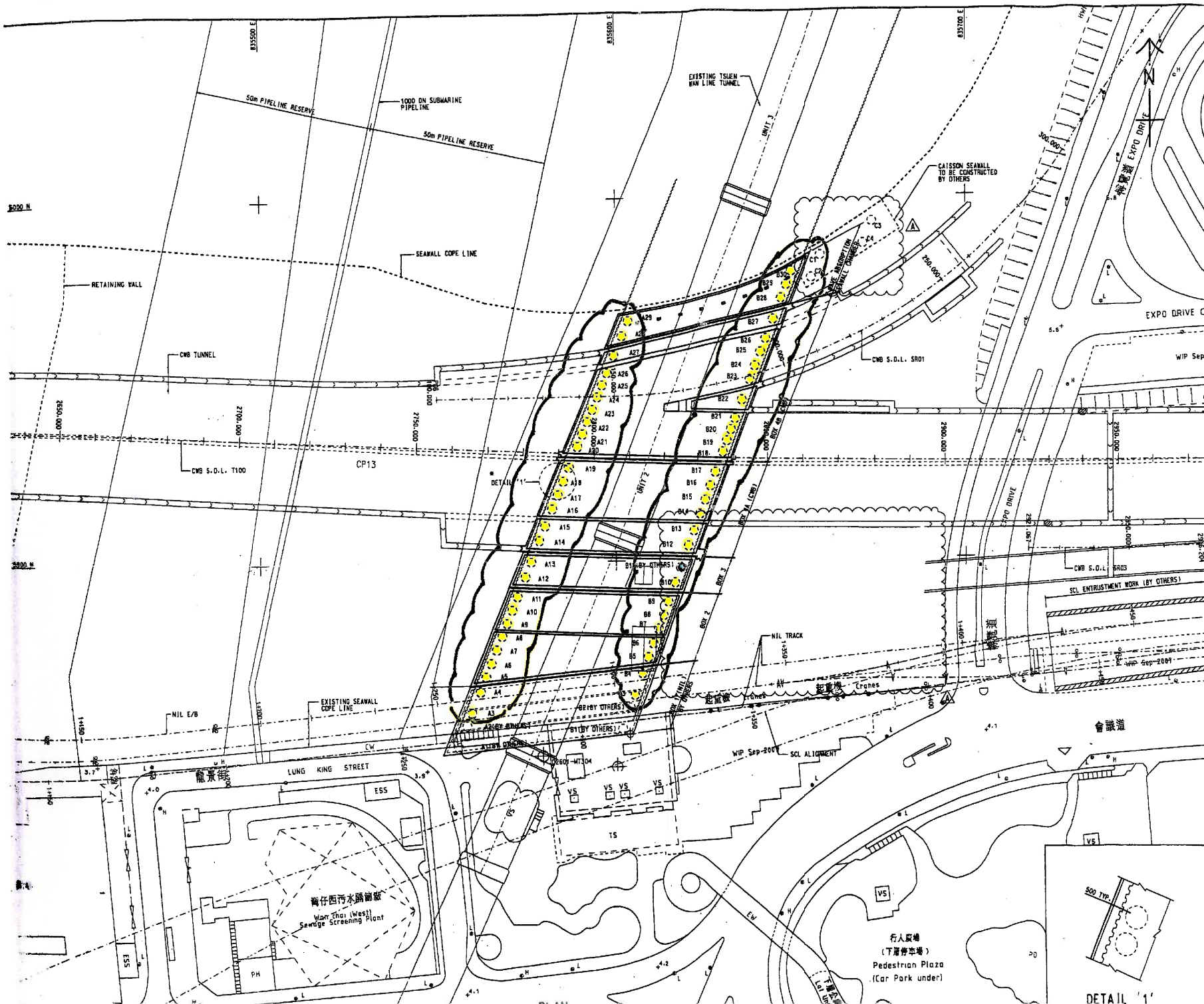
CEED 土木工程發展署
Civil Engineering and
Development Department

WAN CHAI DEVELOPMENT PHASE II
WAN CHAI DEVELOPMENT PHASE II -
CENTRAL-WAN CHAI BYPASS OVER MTR TSUEN WAN LINE
EXCAVATION PLAN FOR
TUNNEL BOX CONSTRUCTION

AECOM

DRG. NO.	60041297/C4/200/1500A
DATE	HK/2010/06
SCALE	A1 : 1 : 500
APP'D BY	RCYC
CHK'D BY	ADC
DATE	17/09/07
SCALE	A1 : 1 : 500
APP'D BY	RCYC
CHK'D BY	ADC
DATE	17/09/07
SCALE	A1 : 1 : 500

COPYRIGHT RESERVED



- NOTES:**
1. THE CO-ORDINATES ARE IN ACCORDANCE WITH THE 1940 HONG KONG METRIC GRID SYSTEM.
 2. FOR BORED PILE DETAILS, REFER TO DRAWING NO. 60041297/C4/400/2002.
 3. FOR SHEET PILE WALLS DETAILS, REFER TO DRAWING NO. 60041297/C4/400/2004.

- LEGEND:**
- A1 7.5m BORED PILE
 - B11 EXISTING 82.5m BORED PILE
 - SHEET PILE WALL

FOR INFORMATION ONLY

A	TENDER ADDENDUM NO.1	SWK/JYL OCT 10
-	TENDER DRAWING	SWK/JYL SEP 10


土木工程師學會
 Civil Engineering and
 Development Department
WAN CHAI DEVELOPMENT PHASE II
 WAN CHAI DEVELOPMENT PHASE II -
 CENTRAL-WAN CHAI BYPASS OVER MTR TSUEN WAN LINE
PILING LAYOUT PLAN

AECOM

DRG NO. 60041297/C4/400/2001A

DESIGNED BY	CHKD BY	DATE	SCALE
CLW	CLW	HK/2010/06	1:1
CHKD BY	DATE	SCALE	
ADC			

行人廣場
(下層停車場)
Pedestrian Plaza
(Car Park under)

DETAIL '1'